

MODULAR HOMES

KINGSLEY

RANCH AND CAPE COD HOMES



KINGSLEY
from Fairmont Homes

2181 East Market Street
Nappanee, IN 46550

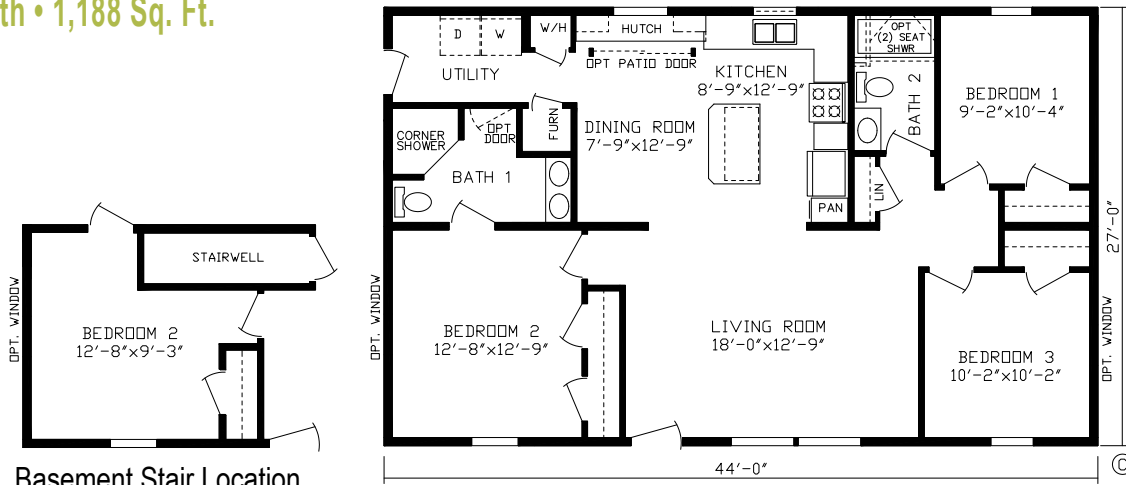
800.777.8787

fairmonthomes.com

BALFOUR

Print #92586

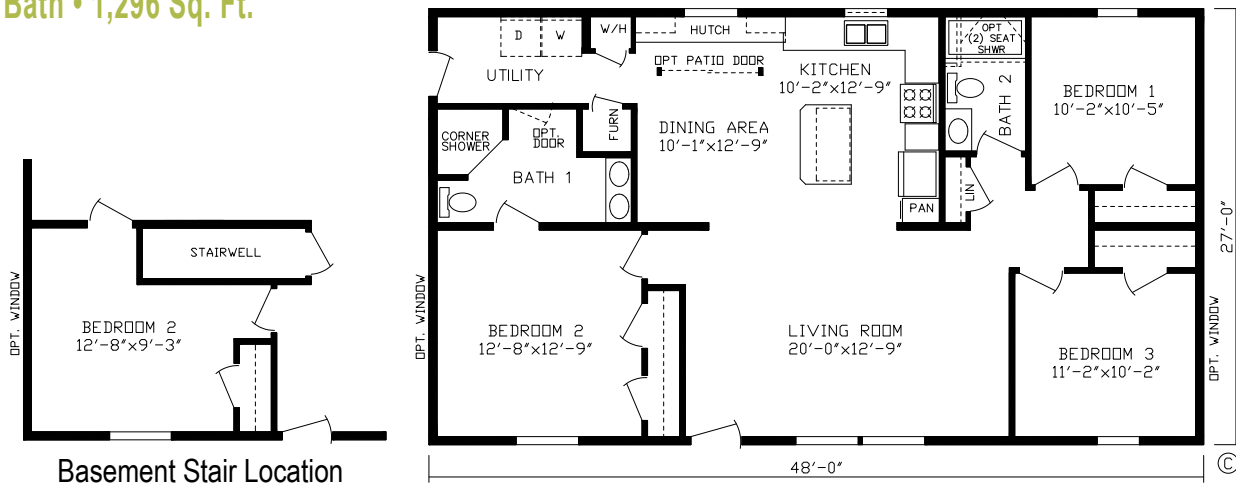
3 Br • 2 Bath • 1,188 Sq. Ft.



BUCKINGHAM

Print #92544

3 Br • 2 Bath • 1,296 Sq. Ft.

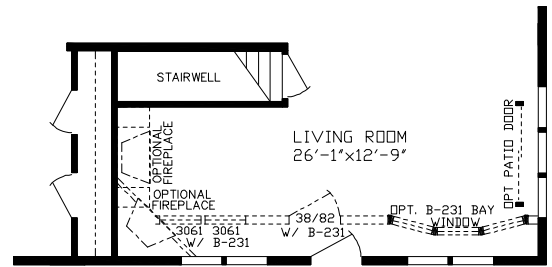
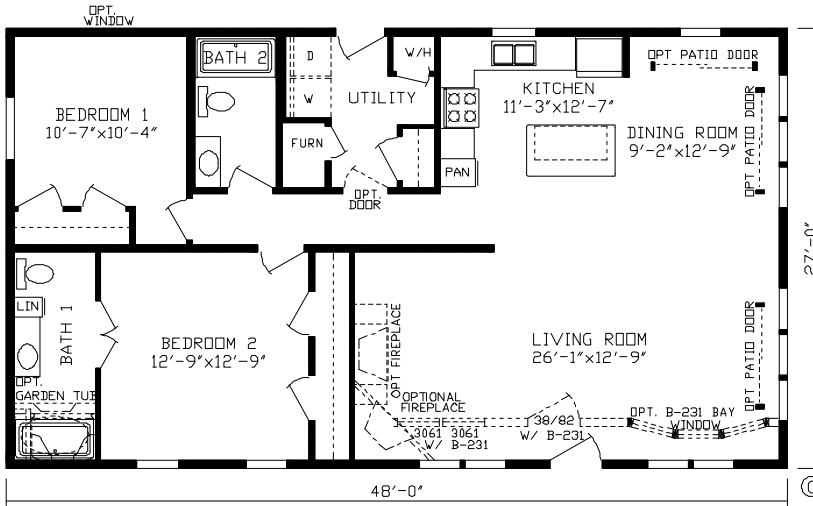




CAMBRIDGE

Print #92511

2 BR • 2 Bath • 1,296 Sq. Ft.

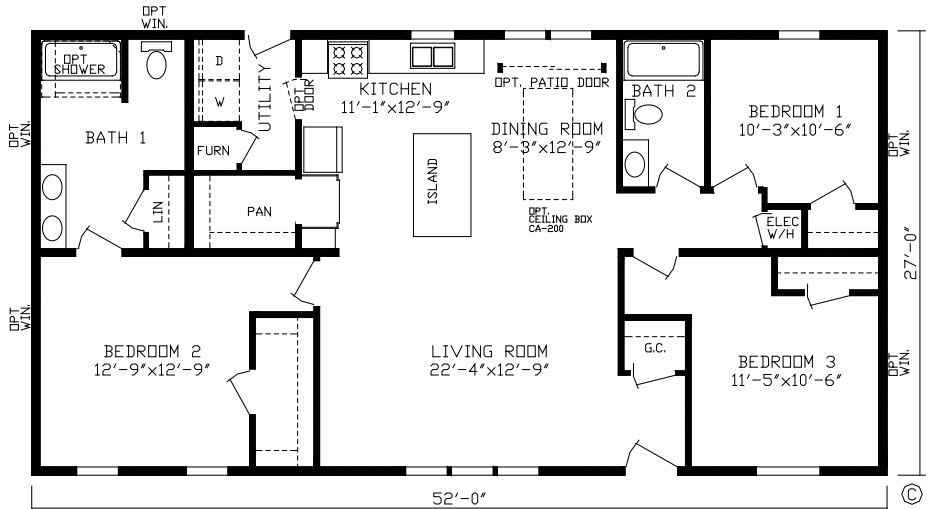


Basement Stair Location

ALEXANDRA

Print #92601

3 BR • 2 Bath • 1,404 Sq. Ft.



Renderings may differ from floor plans

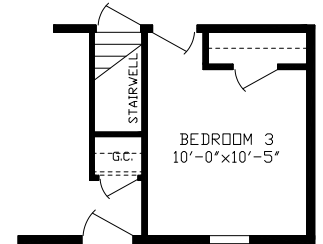
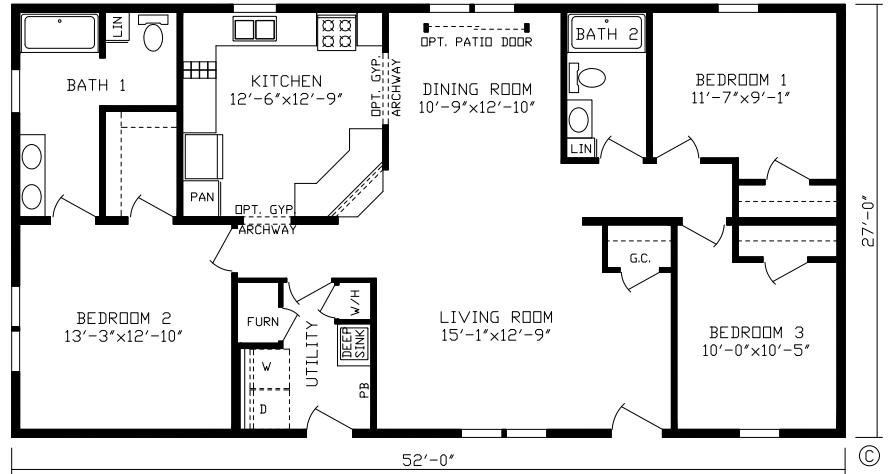
BURBERRY

Print #92583

3 Br • 2 Bath • 1,404 Sq. Ft.

Also Available as 32 Wide

Print #92588



Basement Stair Location

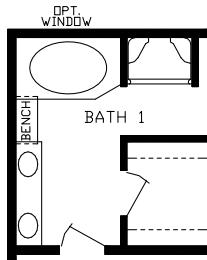


CARDIGAN

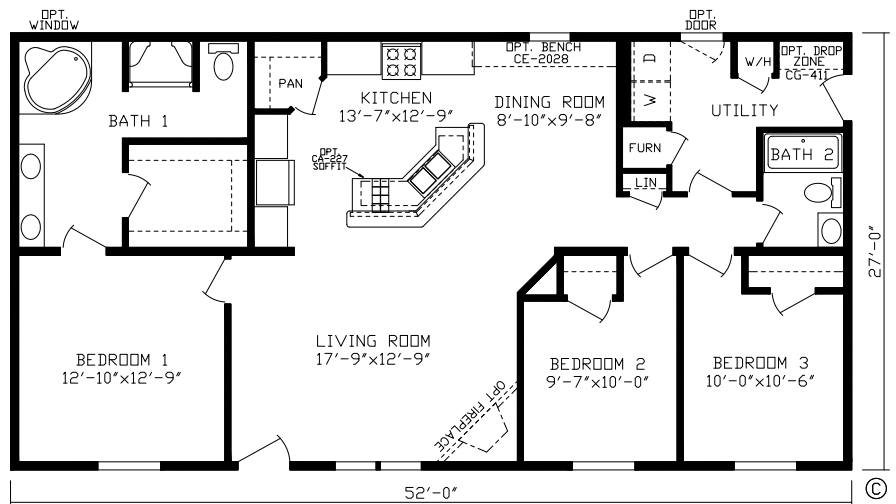
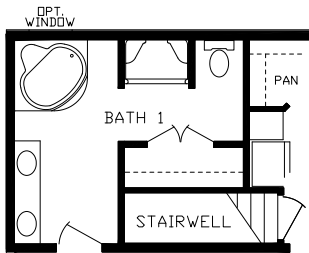
Print #92701

3 BR • 2 Bath • 1,404 Sq. Ft.

RO-4981
Optional
Master Bath



Basement
Stair Location



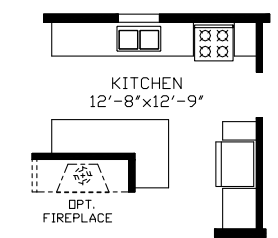
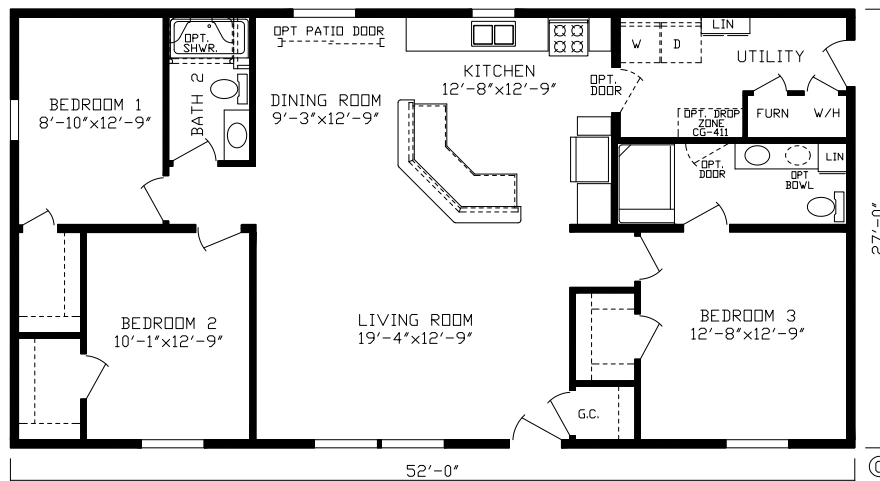
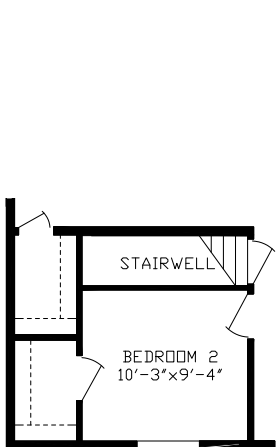
CARLISLE

Print #92566

3 Br • 2 Bath • 1,404 Sq. Ft.

Also Available as 32 Wide
Print #92570

Basement Stair Location

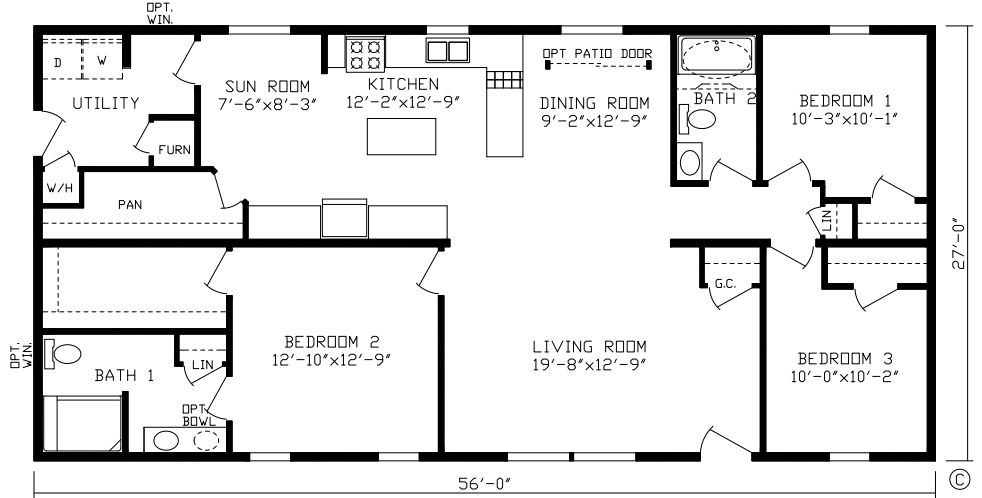
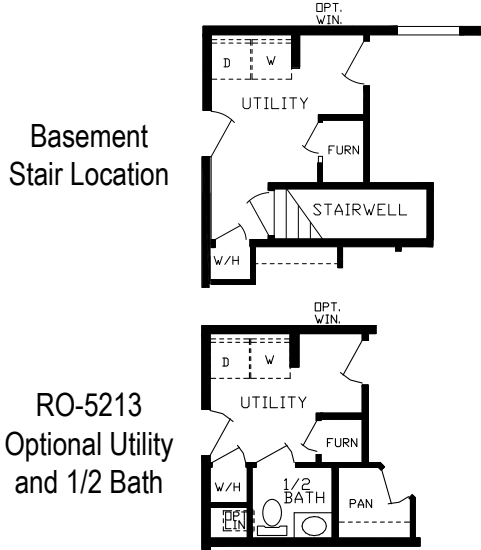


RO-5366
Optional Kitchen
w/Optional Fireplace

DURHAM

Print #92702

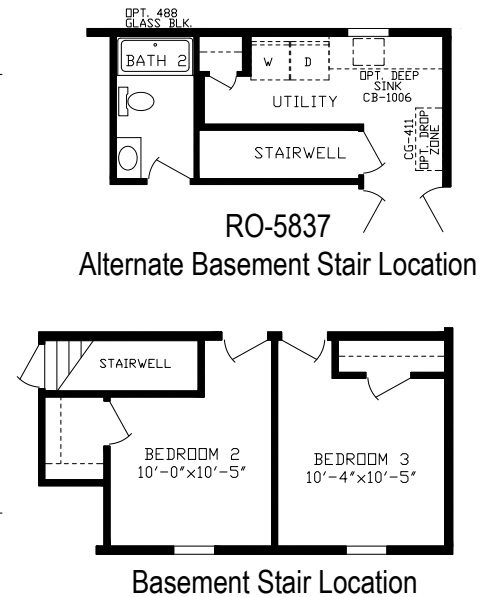
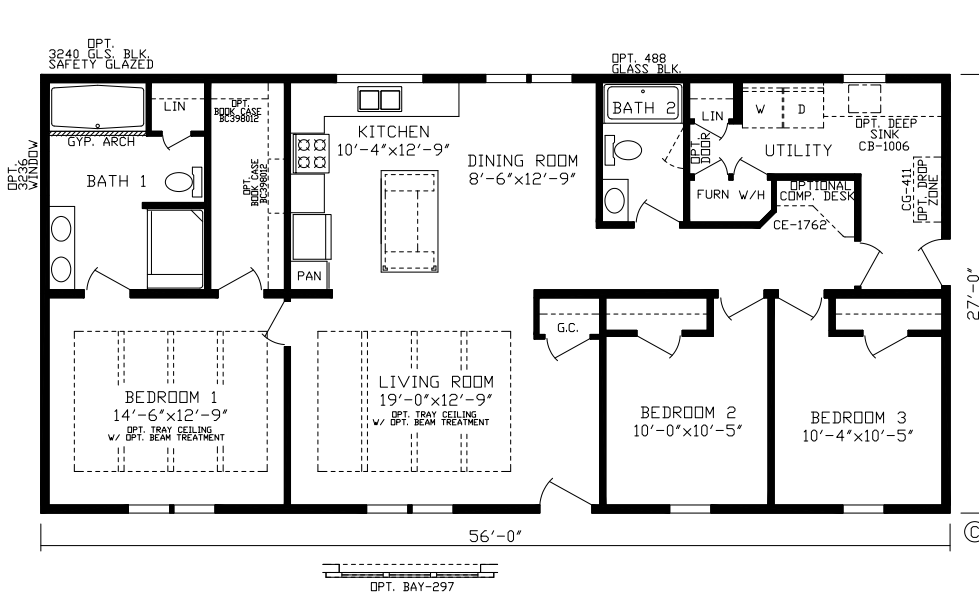
3 BR • 2 Bath • 1,512 Sq. Ft.



NEWPORT

Print #92574

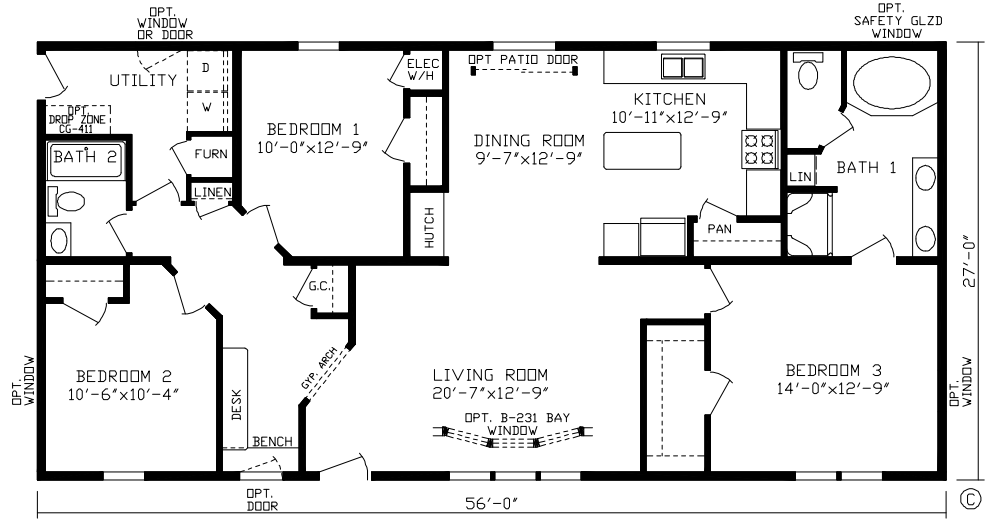
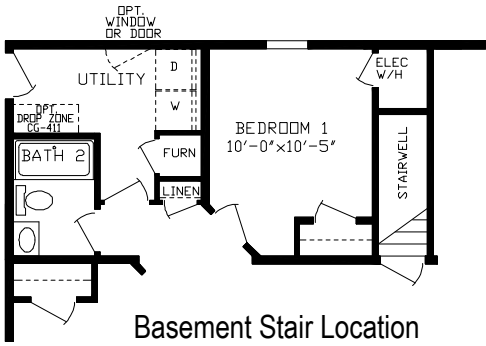
3 BR • 2 Bath • 1,512 Sq. Ft.



NORFOLK

Print #92534

3 Br • 2 Bath • 1,512 Sq. Ft.

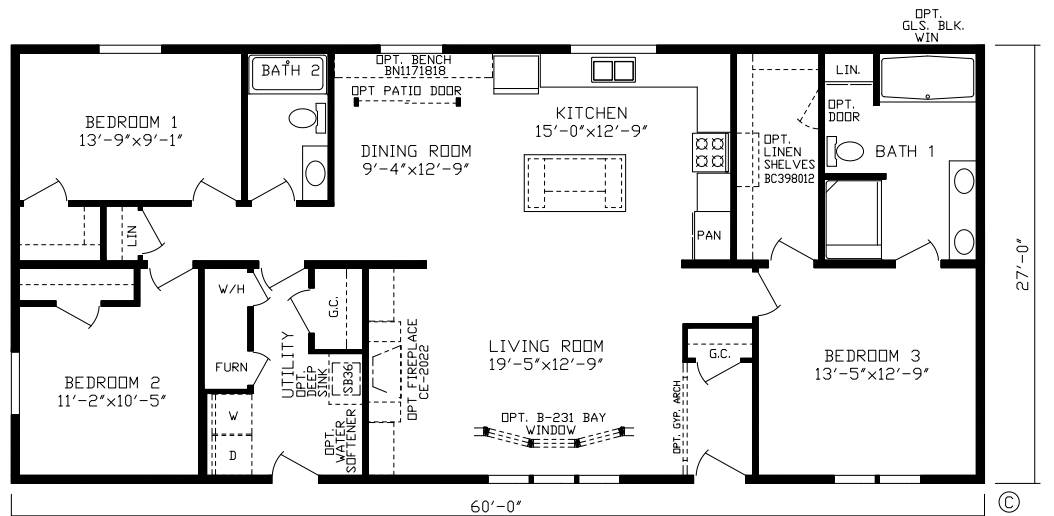
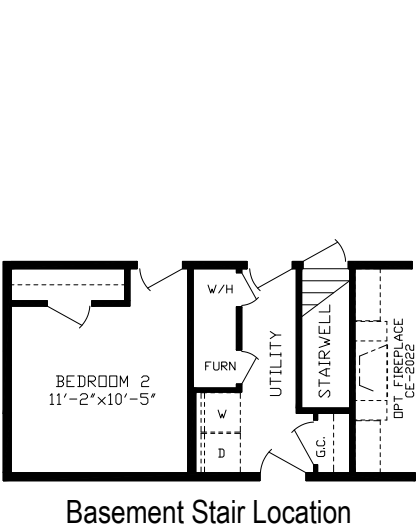


BRISTOL

Print #92592

3 BR • 2 Bath • 1,620 Sq. Ft.

Also Available as 32 Wide
Print #92603

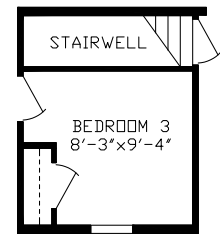
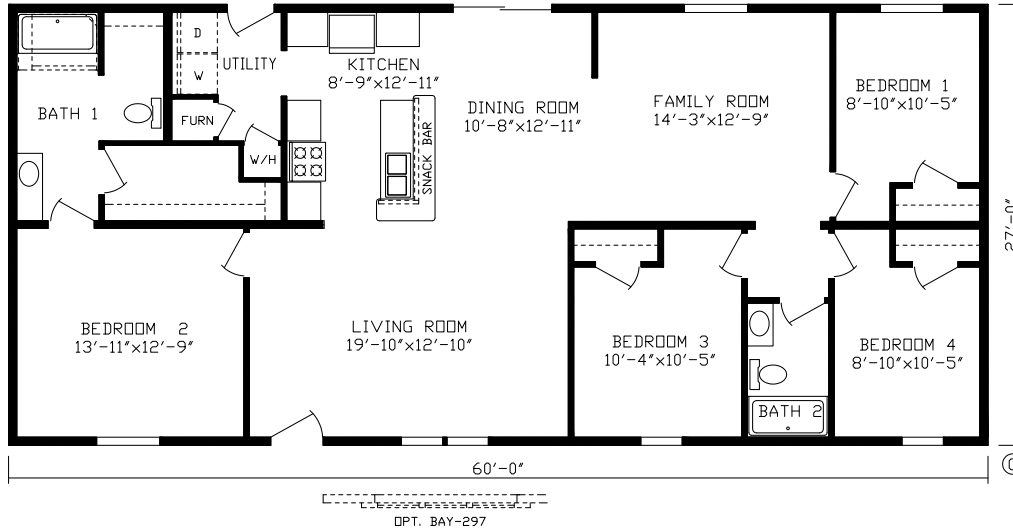


Renderings may differ from floor plans

HIGHVIEW

Print #92605

4 BR • 2 Bath • 1,620 Sq. Ft.

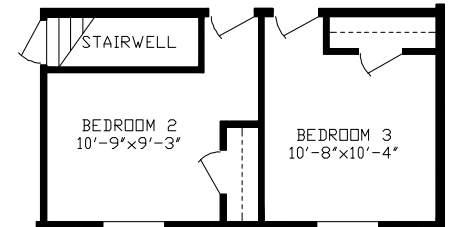
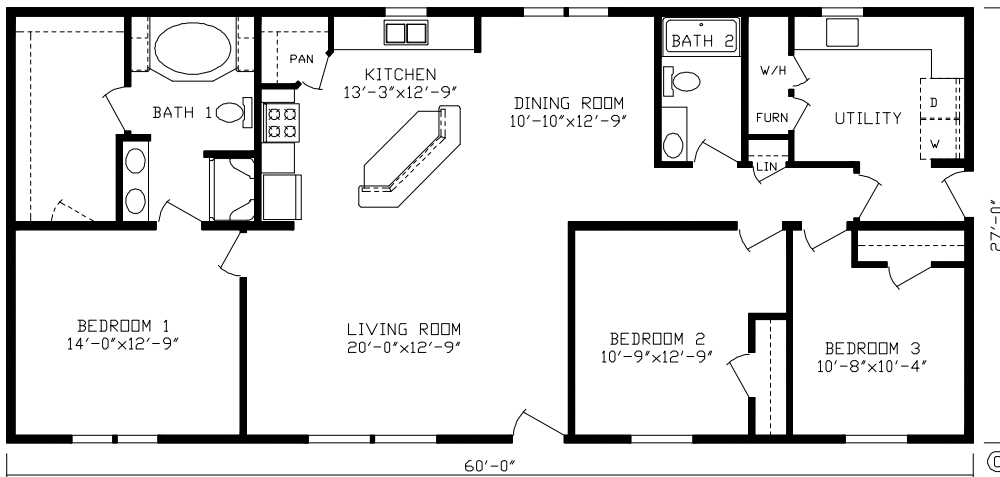


Basement
Stair Location

NOTTINGHAM

Print #92560

3 Br • 2 Bath • 1,620 Sq. Ft.



Basement Stair Location

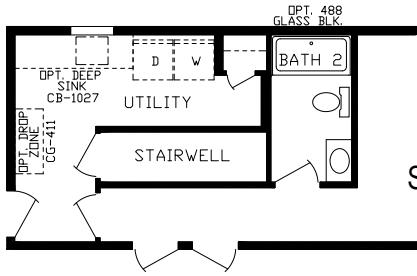
Renderings may differ from floor plans

WINDSOR

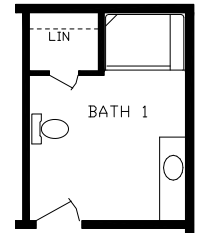
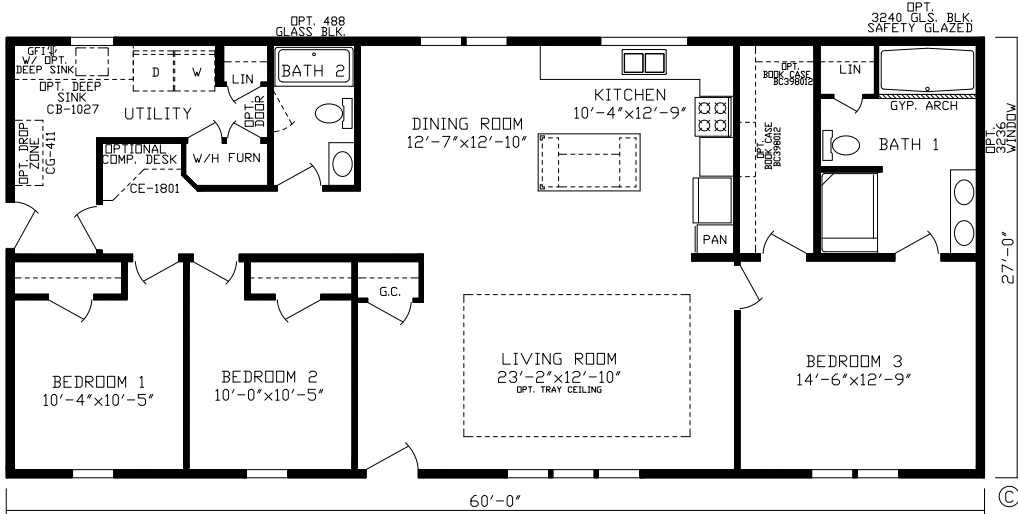
Print #92585

3 Br • 2 Bath • 1,620 Sq. Ft.

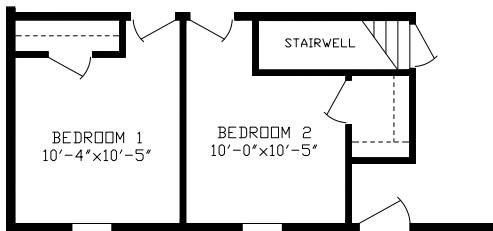
Also Available as 32 Wide
Print #92598



RO-6243
Optional
Basement
Stair Location



RO-6696
Optional
Master Bath



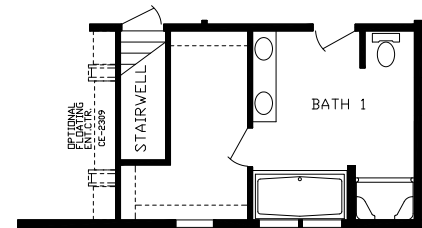
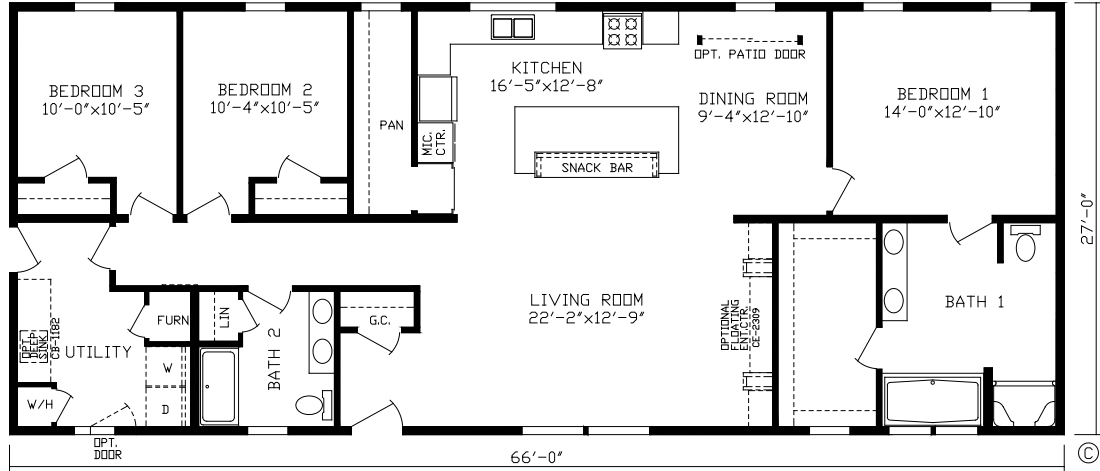
Basement Stair Location



ASHFORD

Print #92608

3 Br • 2 Bath • 1,782 Sq. Ft.

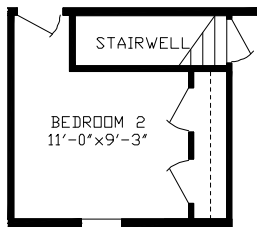
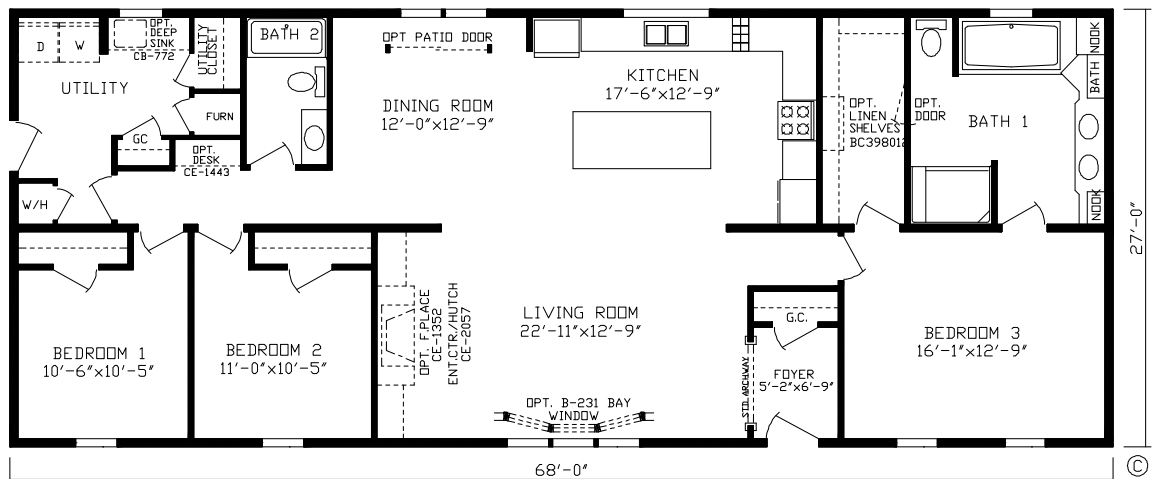


Basement Stair Location

WHITNEY

Print #92582

3 Br • 2 Bath • 1,836 Sq. Ft.



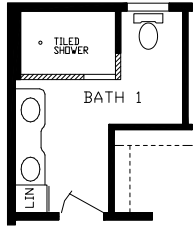
Basement Stair Location

Renderings may differ from floor plans

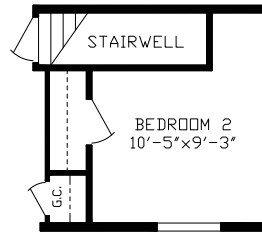
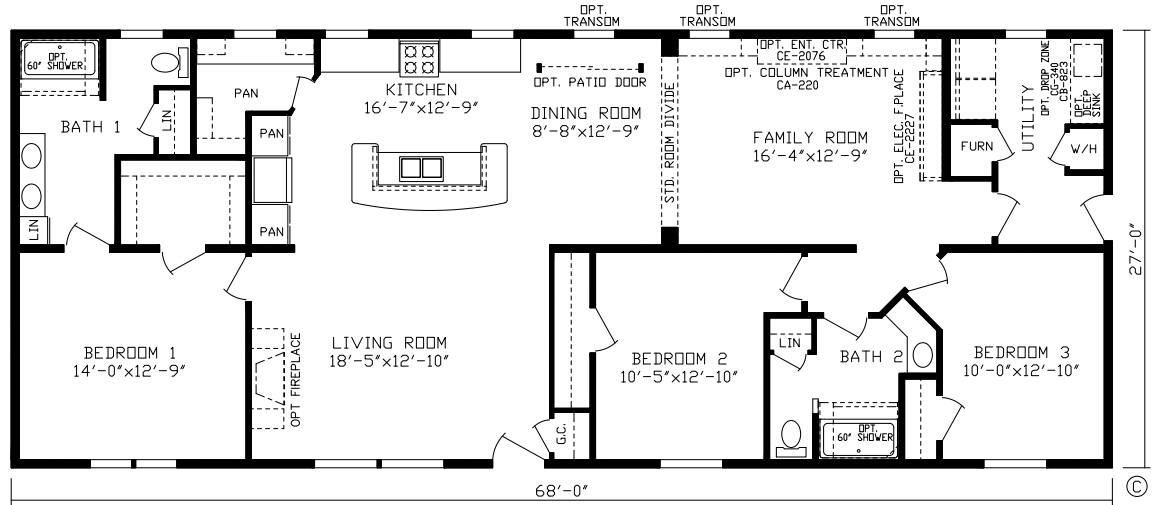
WIMBLEDON

Print #92590

3 BR • 2 Bath • 1,836 Sq. Ft.



RO-6318 Optional Master Bath

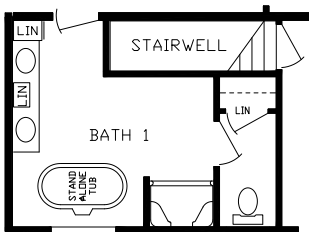


Basement Stair Location

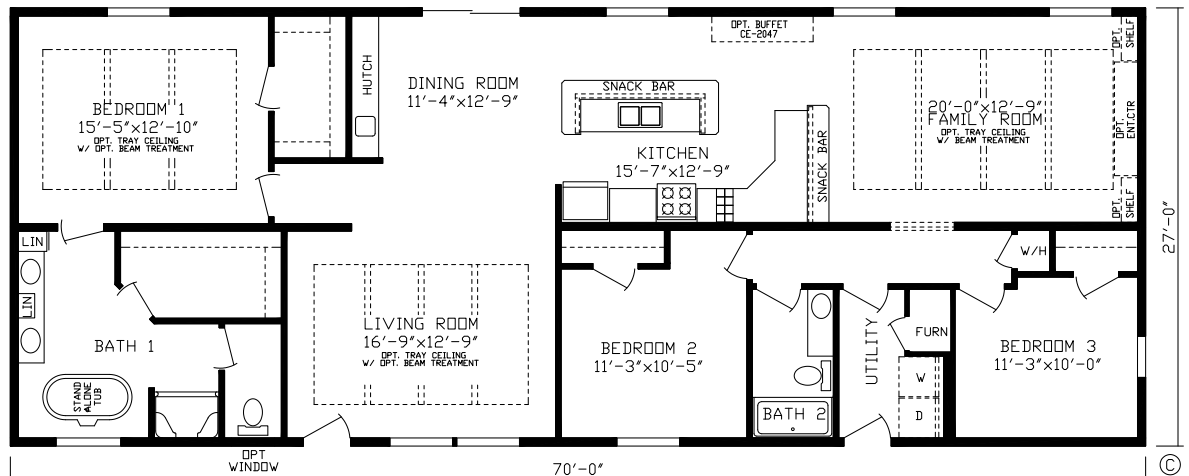
MANCHESTER

Print #92593

3 BR • 2 Bath • 1,890 Sq. Ft.



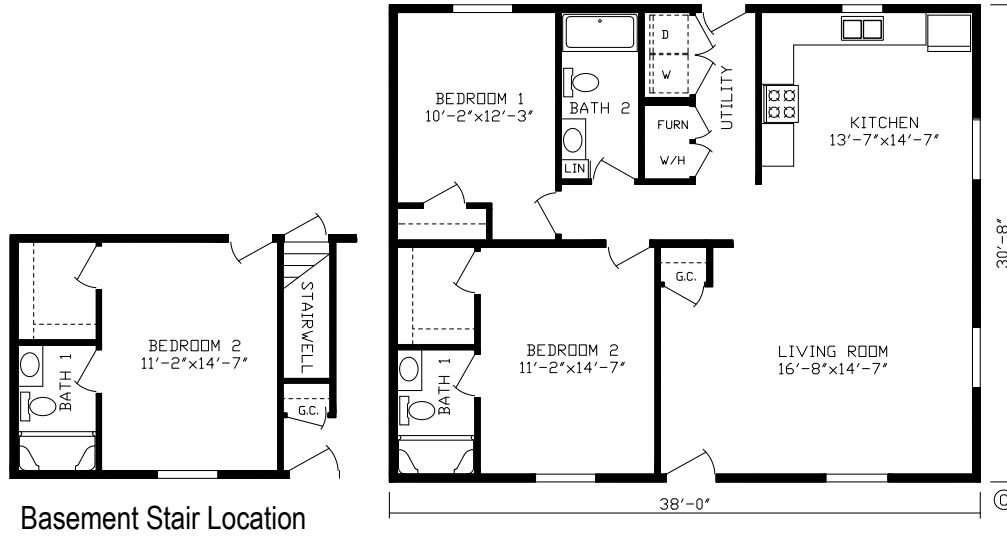
Basement Stair Location



DARTMOUTH

Print #92580

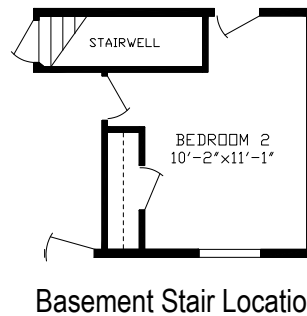
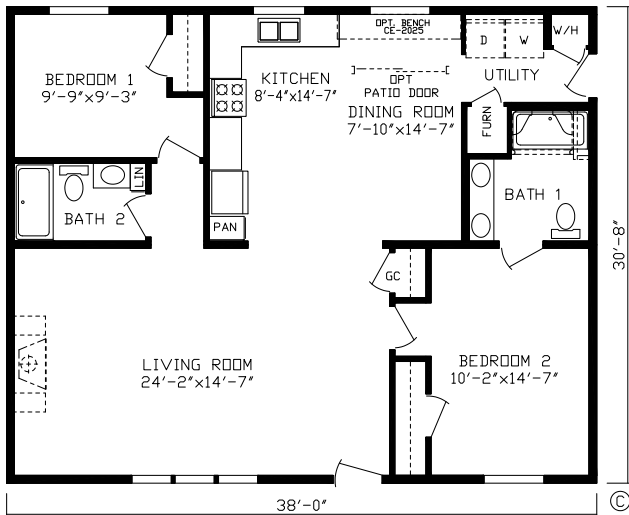
2 BR • 2 Bath • 1,165 Sq. Ft.



WOODLAND BAY

Print #92607

2 Br • 2 Bath • 1,165 Sq. Ft.

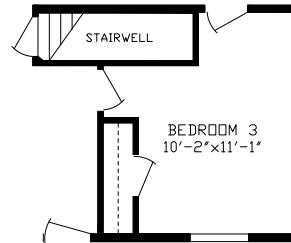
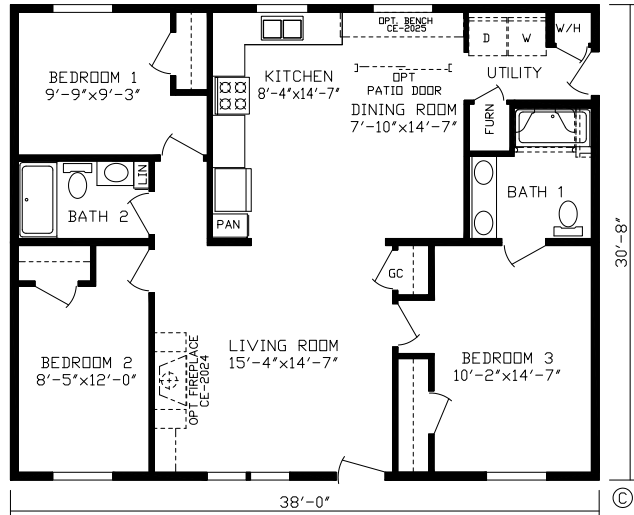


Renderings may differ from floor plans

WOODLAND HILLS

Print #92700

3 BR • 2 Bath • 1,165 Sq. Ft.

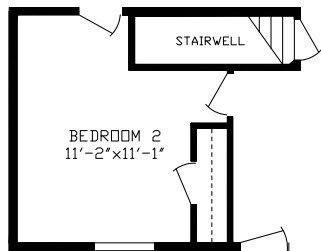


Basement Stair Location

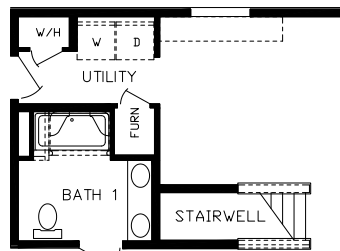
OXFORD

Print #92581

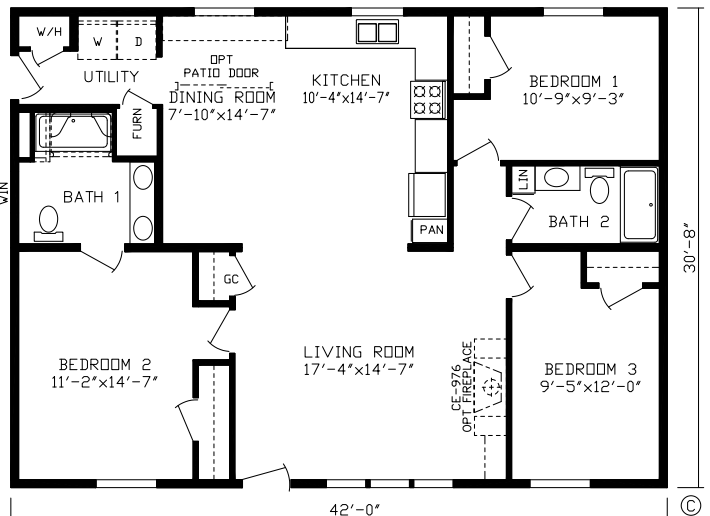
3 BR • 2 Bath • 1,287 Sq. Ft.



Basement Stair Location



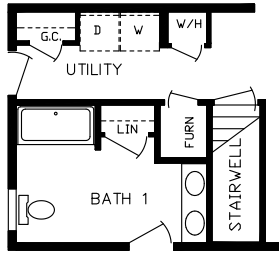
RO-6070
Basement Stair Location
w/Half Walls



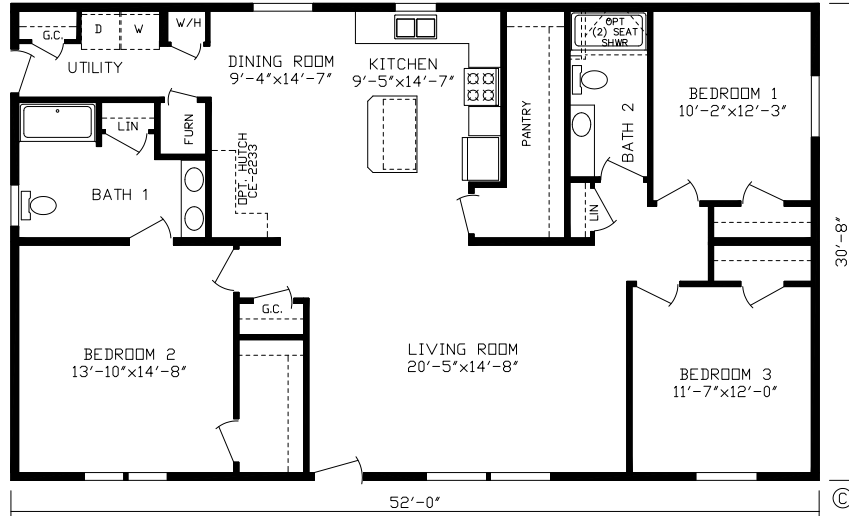
SUNDERLAND

Print #92604

3 Br • 2 Bath • 1,594 Sq. Ft.



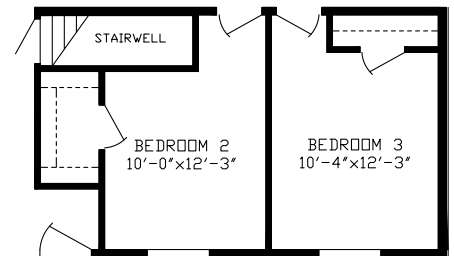
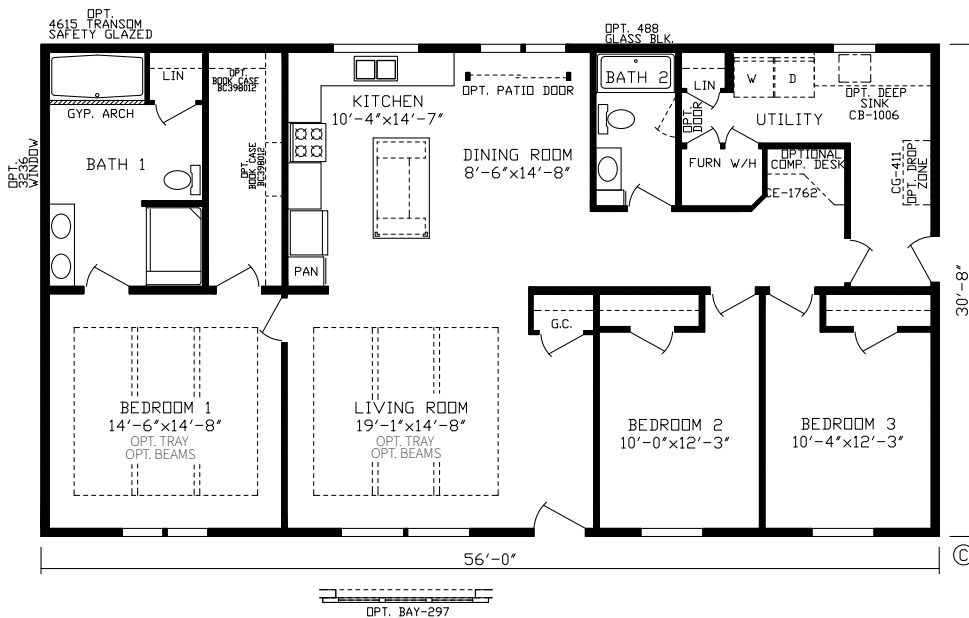
Basement Stair Location



GRANTHAM

Print #92595

3 BR • 2 Bath • 1,717 Sq. Ft.

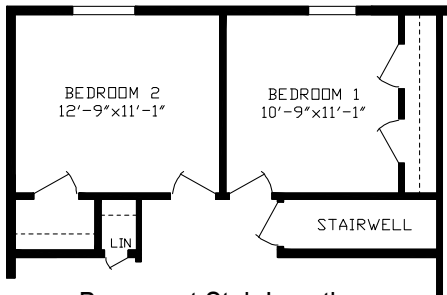


Basement Stair Location

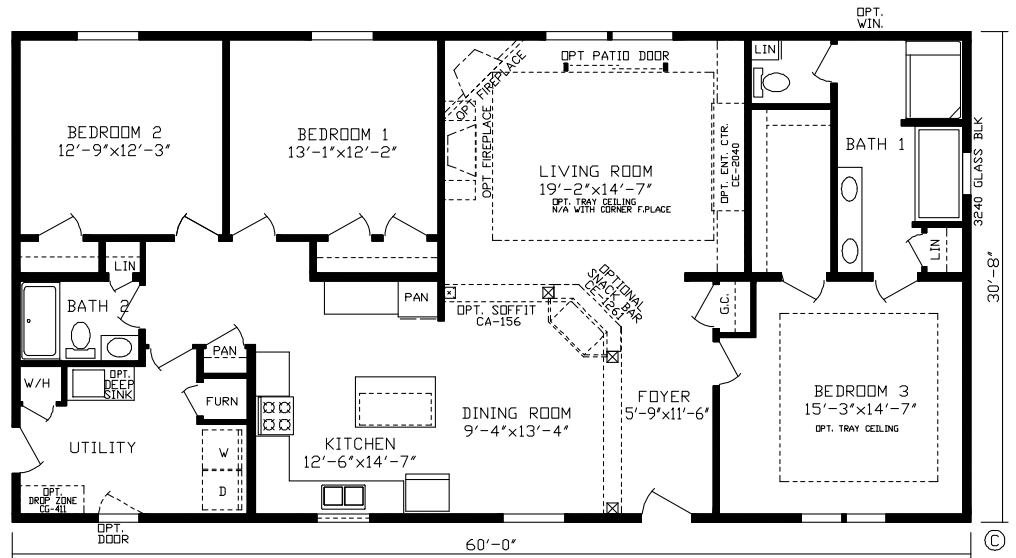
EDINBURGH

Print #92573

3 BR • 2 Bath • 1,840 Sq. Ft.



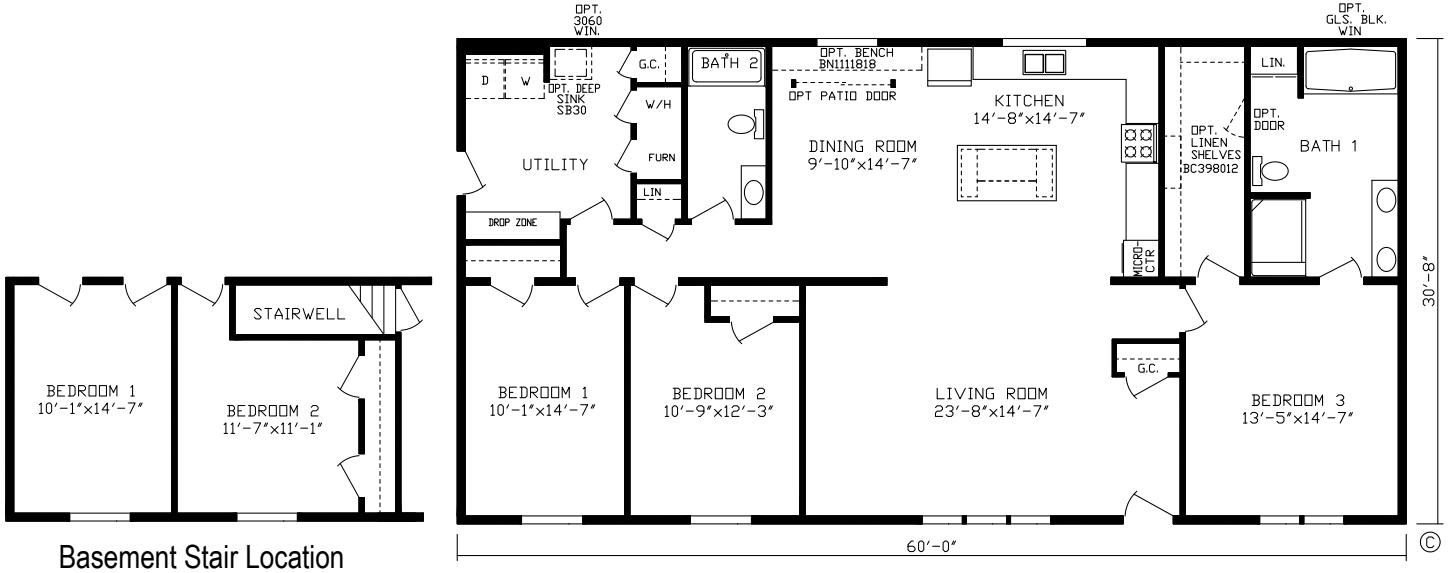
Basement Stair Location



HUNTINGTON

Print #92575

3 BR • 2 Bath • 1,840 Sq. Ft.

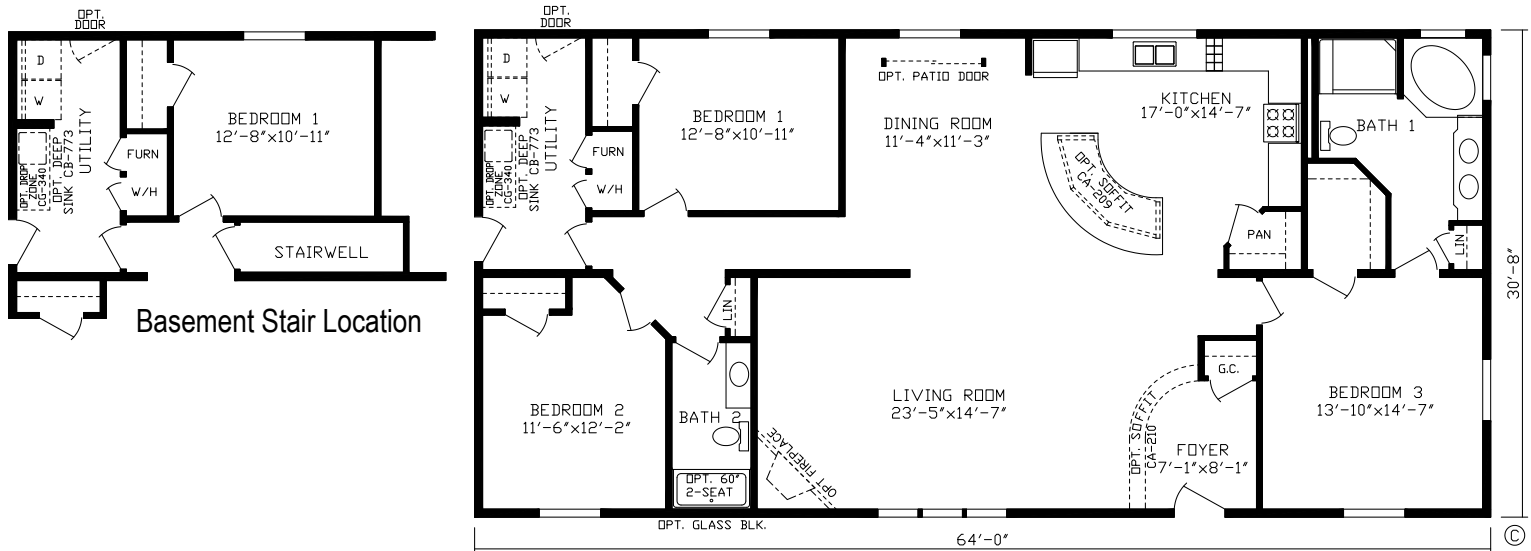


Basement Stair Location

SOUTH HAMPTON

Print #92578

3 Br • 2 Bath • 1,963 Sq. Ft.



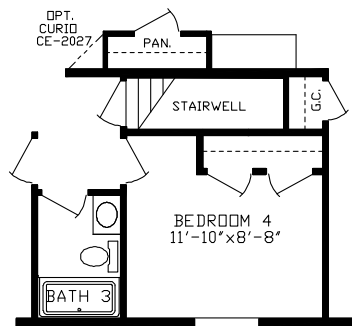
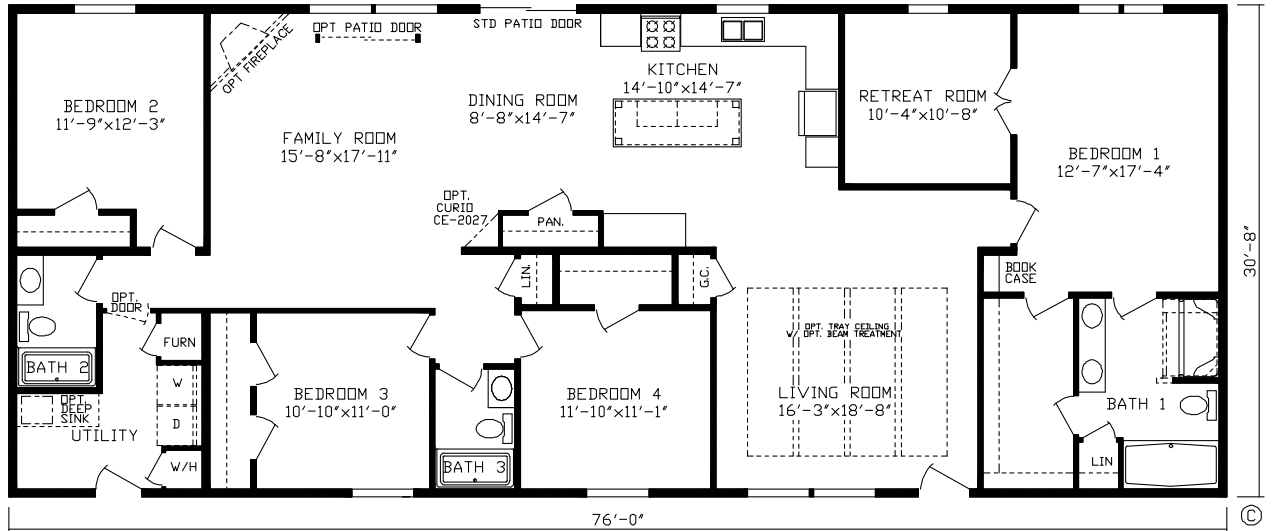
Basement Stair Location

Renderings may differ from floor plans

STAMFORD

Print #92594

4 BR • 3 Bath • 2,330 Sq. Ft.



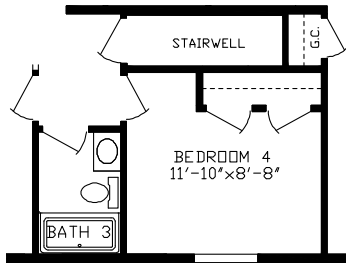
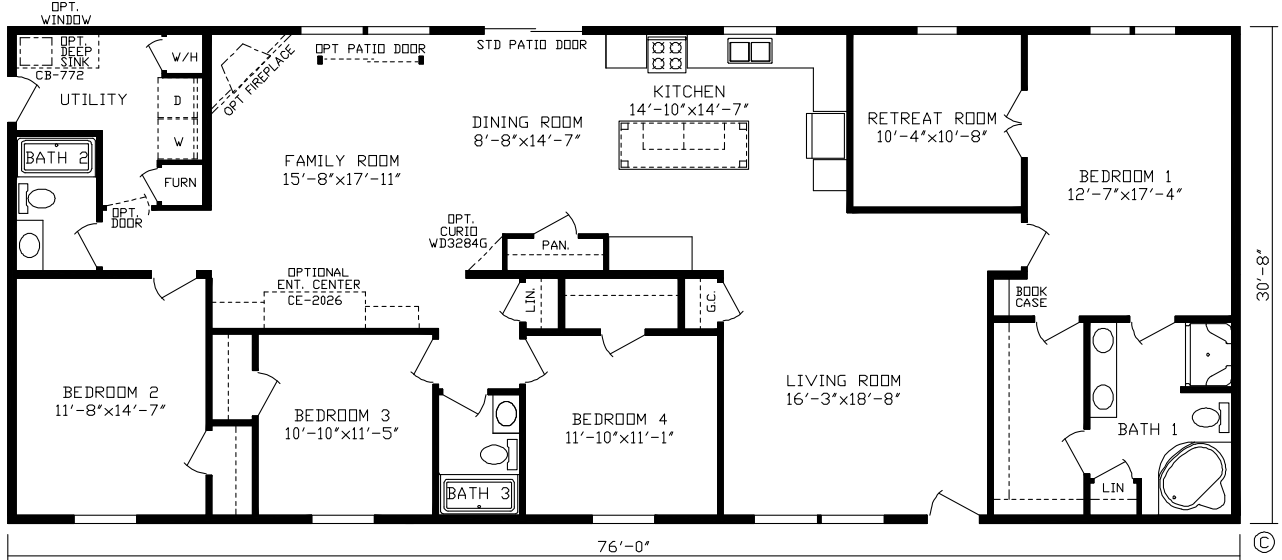
Basement Stair Location



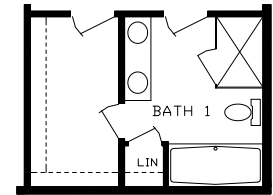
WESTMINSTER

Print #92526

4 BR • 3 Bath • 2,330 Sq. Ft.



Basement Stair Location



RO-4480 Optional Master Bath

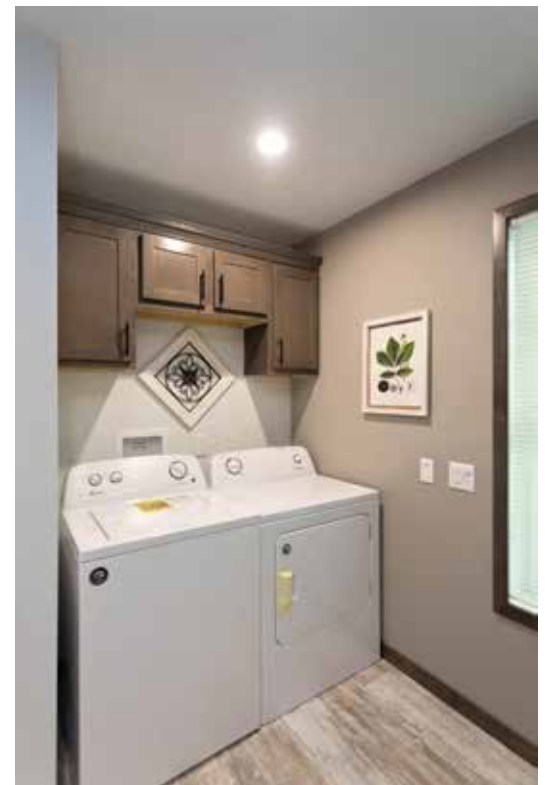
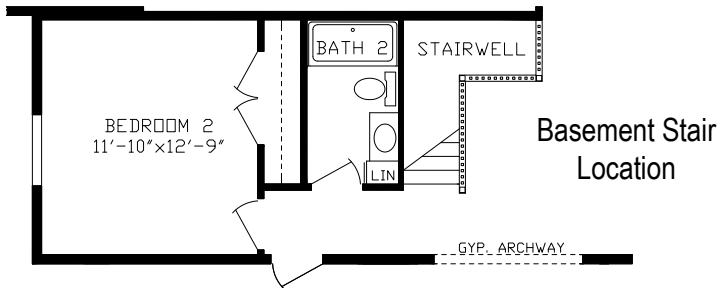
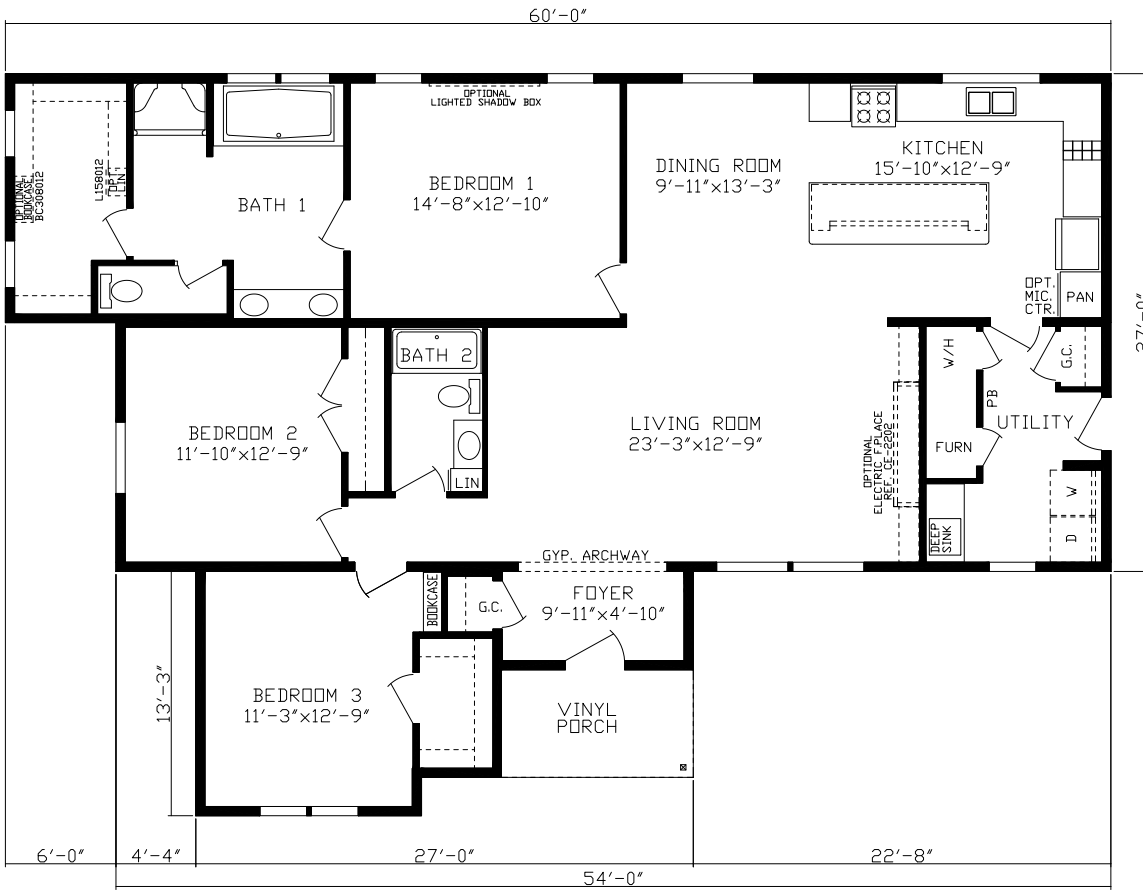


Renderings may differ from floor plans

CHARLOTTE

Print #92602

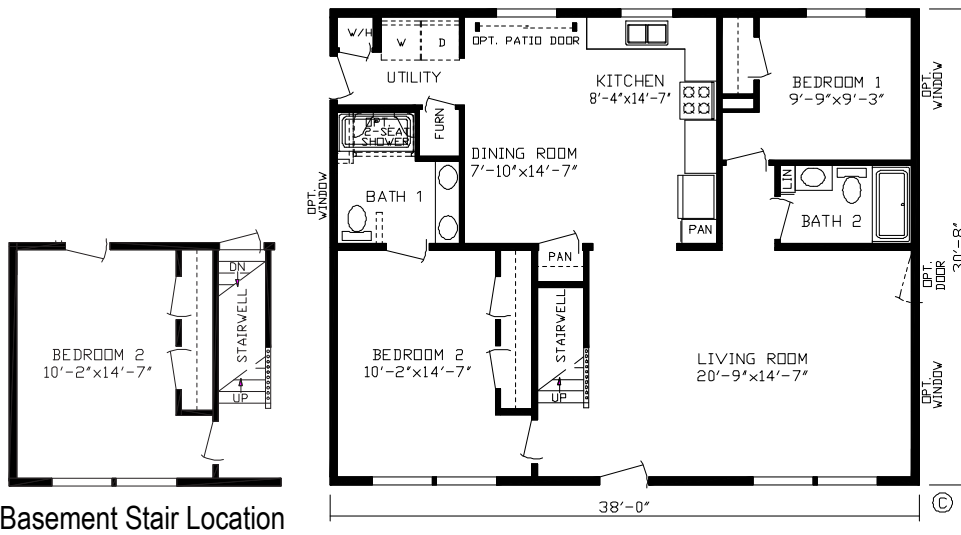
3 BR • 2 Bath • 1,805 Sq. Ft.



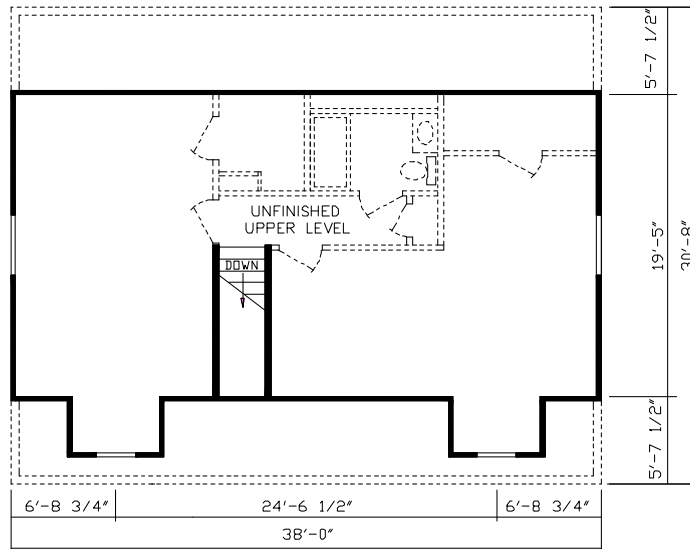
ARBOR RIDGE

Print #99700

2 BR • 2 Bath • 1,165 Sq. Ft.



Basement Stair Location

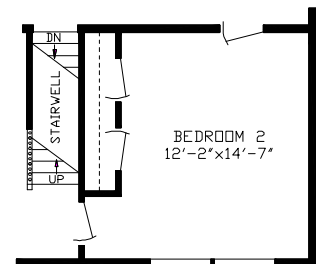
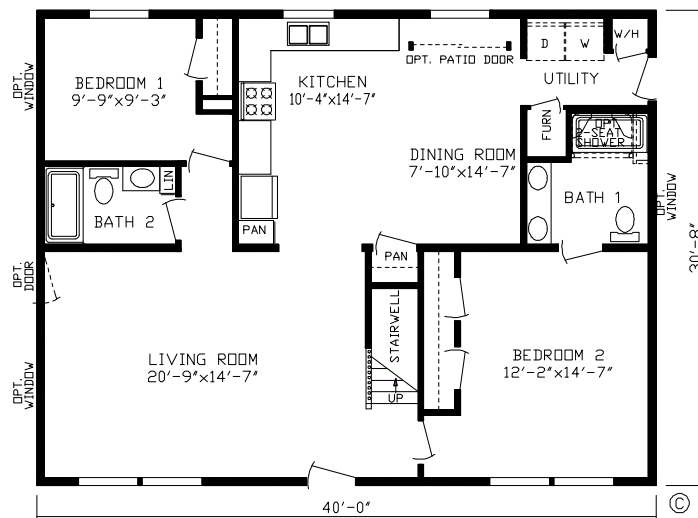


Upper Level
Finished On-Site
by Others

ARLINGTON

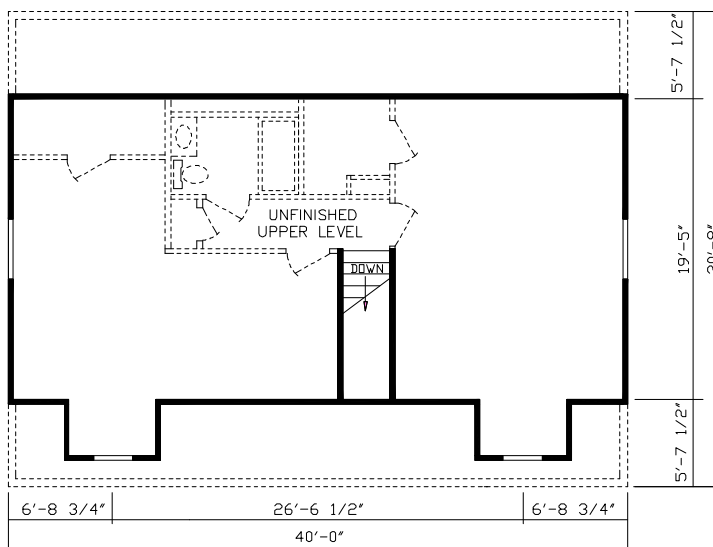
Print #99703

2 BR • 2 Bath • 1,226 Sq. Ft.



Basement Stair Location

Upper Level
Finished On-Site
by Others

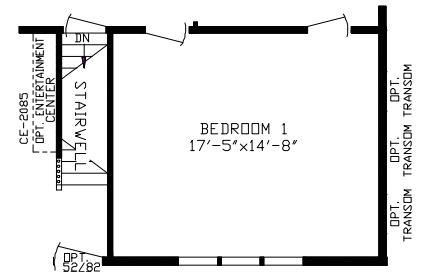
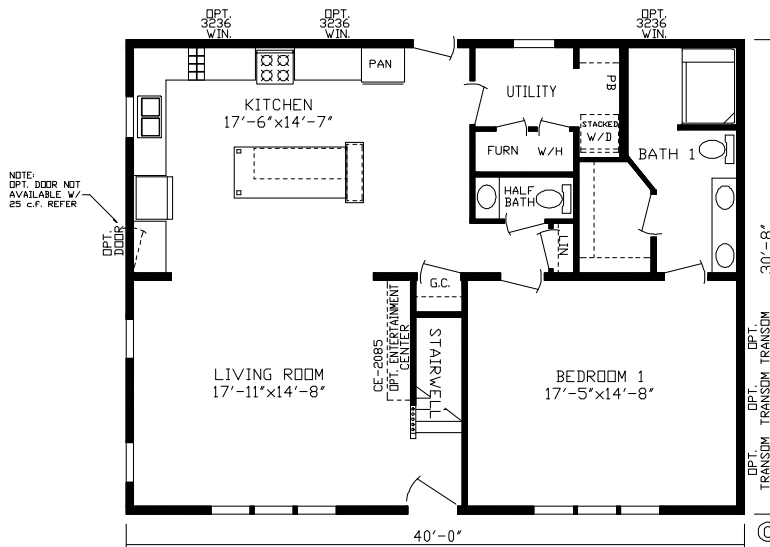


Renderings may differ from floor plans

NEWBERRY

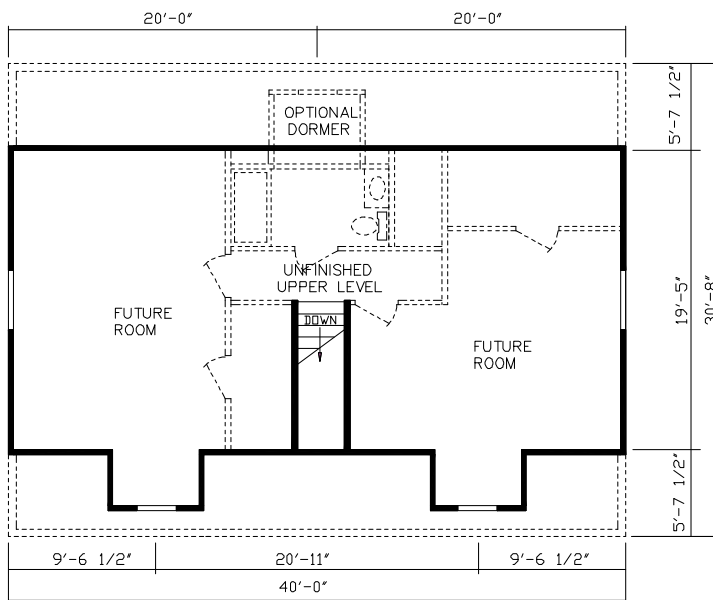
Print #99704

1 BR • 1.5 Bath • 1,226 Sq. Ft.



Basement Stair Location

Upper Level
Finished On-Site
by Others



Renderings may differ from floor plans



1. A Generous Bead of Glue Applied to Each Joist; 3/4" T&G Floor Decking is Screwed Around Perimeter and in the Field to Sturdy Open Joists
2. Individually Engineered Duct System with Perimeter Registers
3. 2x6 Exterior Wall Studs 16" on Center Featuring a Thick Blanket of Fiberglass Insulation
4. Calculated Headers on Edge Above All Windows and Patio Doors
5. Structural Board Sheathing Adds Extra Strength to All Exterior Walls
6. Weather Wrap Decreases Wind Infiltration
7. Galvanized Steel Strapping from Sidewall to Floor
8. 50 lb. Engineered Roof Trusses with Steel Plates at Critical Joints
9. Energy Saving Blown Roof Insulation Adds to the Comfort of Your Home
10. Air Chutes Ensure that the Roof Breathes Properly
11. 1/2" Structural Roof Decking
12. Lifetime Architectural Shingles
13. Energy Saving Low "E" Thermopane Argon Gas Filled Vinyl Windows with Grids
14. 2x6 Bottom Plates and Double 2x6 Top Plates on All Exterior Walls



MODULAR
CRADLE
OF
STRENGTH

ENERGY SAVING FEATURES INCLUDE

- Trane® High Efficiency Furnaces Use Up to 27% Less Energy than Standard Forced Air Furnaces
- 2x6 Exterior Walls Filled with Fiberglass Insulation Enfold You in Warmth and Comfort
- Vinyl Clad Low "E" Argon-Filled Energy Efficient Windows with Dual Weather-Stripping and Pocketed Sash for Superior Resistance to Air Infiltration
- Engineered Insulated Duct System — Our Duct System is Sealed and Insulated to Provide Maximum Efficiency and Balanced Air Flow for Years of Savings and Comfort.



KINGSLEY

RANCH AND CAPE COD HOMES

STANDARDS

- 50# Roof — Insulated to Meet State Code
- Lifetime Architectural Shingles
- 5/12 Hinged — 8' Flat Ceilings
- Web Truss Floors - 16" O.C.
- 7/16" OSB with Weather Wrap
- 2" X 6" - 16" O.C. Sidewalls
- 1/2" Smooth Finished Drywall
- 12" Raised Panel Shutters on Doorside
- White Vinyl Low E Windows with Grids — Argon Filled
- 38"x82" 6-Panel Steel Front Decorator Door w/ Storm
- 34"x82" Steel Rear Decorator Door w/Storm
- 6-Panel White Interior Doors
- 6-Panel Furnace & Water Heater Doors
- High Efficiency Trane® Gas Furnace — Installed
- Perimeter Heat
- 40 Gallon Electric Water Heater — Installed
- Water Shut-Offs Throughout
- Exterior Frost Free Faucet
- 200 Amp Service
- China Lavs
- Moen® Faucets
- Hardwood Shaker Cabs
- Drawer over Door Construction
- Dovetail Drawers
- 2-1/4" Door & Window Casing
- 3-1/2" Base Molding Throughout
- Formica Backsplash in Kitchen and Baths — Standard
- Designer Draperies / 1" Mini Blinds



2181 East Market Street
 Nappanee, IN 46550
 800.777.8787

Note: Fairmont Homes reserves the right to make changes in price, colors, materials, components and specifications and to discontinue models at any time; without notice or obligation. Fairmont Homes assumes no responsibility for any error in type or print reproduction of specifications or floor plans in this brochure.

©2019 Fairmont Homes LLC, ALL RIGHTS RESERVED, Rev 06/2019